

# Discover the Power of Touch

MyLabClass™ C





## Opti-Light

Optimal lighting has always been a crucial factor for ultrasound imaging. The latest Widescreen LCD Monitor Technology allows images to be clearly displayed under any condition. MyLabClassC also introduces an additional unique feature: Opti-Light. This feature, thanks to a light point behind the monitor, allows the operator to control the room's lighting level directly from the system, through the especially designed controls located on the touch screen. Optimized working conditions, better users' comfort and improved patient care.



## Your Comfort with a Touch

### Simplicity

Whenever physicians think of a high-level ultrasound systems, they ask for up-to-date platforms, with high-performance and advanced on-board technologies as well as simplicity and ease of use. MyLabClassC has been designed based on these key concepts in order to deliver a reliable diagnosis and to ensure every day productivity. With just one glance you will understand how MyLabClassC's simplicity has never been seen before on such a high level ultrasound scanner.

### Ergonomics

High performance does not always mean large and stationary systems. A particular effort has been made in order to reduce size and to increase the new MyLabClassC's ergonomics. This has led to a compact and agile system, which is easy to move and is able to adapt to any kind of environment, including most critical ones such as interventional and the operating rooms. The height-adjustable and rotating keyboard, as well as the multiplane-articulated monitor arm, allow for optimal positioning at all times.



Monitor orientation and articulated arm

ECG cable and connectors holders

Customizable probe holders

Multifunction Touch Screen

Keyboard rotation and height adjustment

Easy Control panel

### Touch Screen

The large high-quality touch screen is well positioned near the most important working area of the control panel. This touch-screen allows all mode-dependent parameters to be clearly displayed and changed with one simple touch.



Completeness  
with a Touch

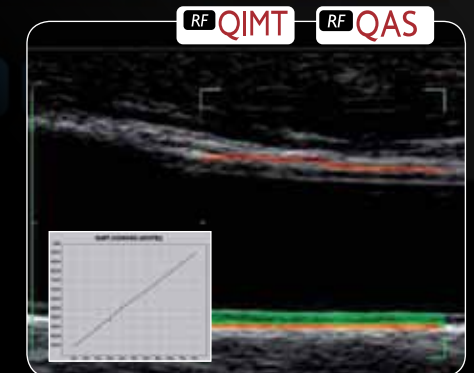
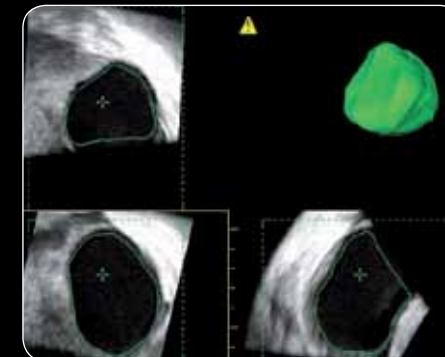
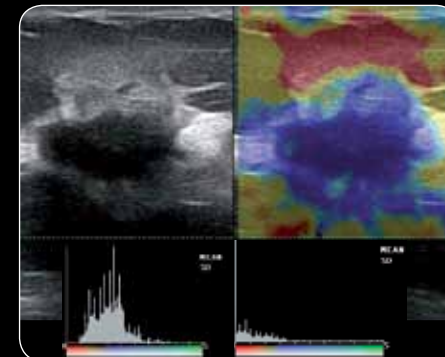
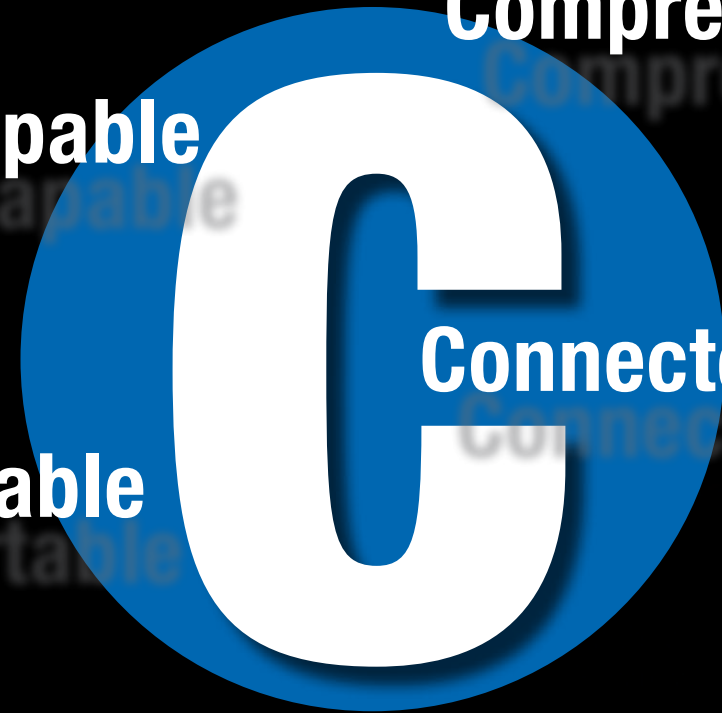
Comprehensive

MyLabClass C

Capable

Connected

Comfortable



**iQ Probes**

The primary component in the signal processing chain leading to the final ultrasound diagnostic image is the transducer. The technology and the material's design employed to manufacture an ultrasound transducer are the key factors in determining the system's image quality. iQProbe represents Esaote's state-of-the-art technology designed to improve performance and ergonomics, iQProbe Technology is based on:

- Innovative Active Matrix Composite Material
- Multiple Adaptive Layers Solution
- Structure Filling Material manufacturing process
- Intelligent Geometric Lens Manufacturing Process

**CnTI™**

CnTI™ (Contrast Tuned Imaging) Esaote's revolutionary technology, in combination with latest generation ultrasound contrast agents, provides impressive clinical results due to precise micro-bubble detection. The very low acoustic pressure applied, allows the bubbles life time to be increased, for a clear identification of arterial and late phase. The very high probes sensitivity and the low level of noise and artefacts bring to precise diagnosis, both for lesions detection and characterization. A contrast-dedicated quantification tool is also available.

**HD CFM and XFlow**

Color Doppler sensitivity and resolution are very important in the assessment of blood flows, specially for those flows with limited dimensions and velocities.

HD CFM technology helps the user to define the right setting to obtain the maximum clinical information.

In case of particular diagnostic processes in which morphological information are more important than the hemodynamic itself, XFlow delivers clear pictures with reduced artefacts, and less-important insonation angle dependance.

**High Frequency Image**

Esaote historical leadership in High-frequency Imaging deliver unexpected level of details in any application in which superficial images are required. 18 MHz transducers, XView, MView, ElaXto and X4D, as well as "A Universe under the mm" package are just few examples of the technological potential of the MyLabClassC. The clinical results are simply astonishing, open new research fields and new levels of diagnosis.

Advanced technologies such as ElaXto and X4D are implemented not just as additional qualitative information, but as important quantitative package to deliver objective and fast diagnosis.

**X4D Technology**

The advanced 3D/4D package takes advantage of innovative ways of visualizing conventional 2D ultrasound images through sophisticated algorithms and is able to deliver outstanding 3D/4D volume reconstructions. Measurements of length, surface, perimeter, diameter and angle as well as volume areas in the multi-dimensional display allow to provide both quantitative analysis and qualitative acquisition, with the link to a special database to file all personal data sets.

**RF QIMT\_QAS**

RFQAS (Quality Arterial Stiffness) together with RFQIMT (Quality Intima Media Thickness) are part of the exclusive Esaote Advanced Vascular Package, based on the Esaote RF-data technology.

These two advanced technologies have a fundamental role in the Esaote "Prevention and Quantification" program, with the target of early detection of atherosclerosis and cardiovascular disease (CVD).

Accuracy, ease of use, real time immediate feedback, report and graphs allow physicians to easily evaluate possible consequence that any disease or treatment might have on the vascular system.



# Integration with a Touch

Data management is very important today, both for users' comfort and patient care. Esaote offers an efficient solution for any need and any environment, ranging from stand alone workstation up to complex modular architectures. MyLabClassC wireless ultrasound allow also to be wireless connected to improve data sharing, integration and efficiency.



## MyLabDesk

A flexible way to connect your MyLab to the PC, easily!

MyLabDesk is Esaote's answer to its user's need for a simple and straightforward way to archive, review, post-process, report or print their MyLab examinations on a PC from the comfort of their (home) office or while travelling. MyLabDesk provides the means to increase workflow and productivity in private offices, as well as in clinics and hospital departments.

- Archive, review and post-process examinations performed with the MyLab ultrasound systems.
- Import Esaote native file formats (UAF and EAF raw data) via USB, CD/DVD and network.
- Perform general and application-specific measurements.
- Review, change and print the examinations (reports and images).
- Export data using PC's standard features, i.e. burn on a CD/DVD, email, etc.



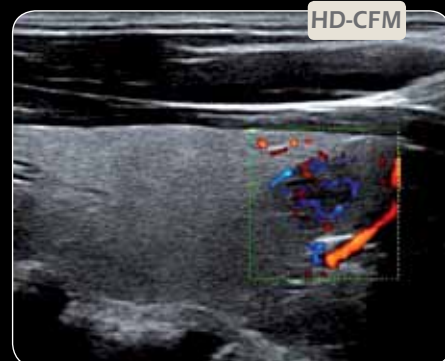
## iQProbes



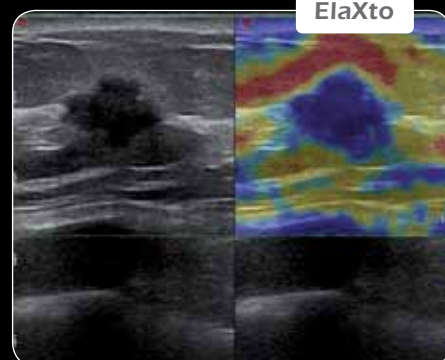
XView



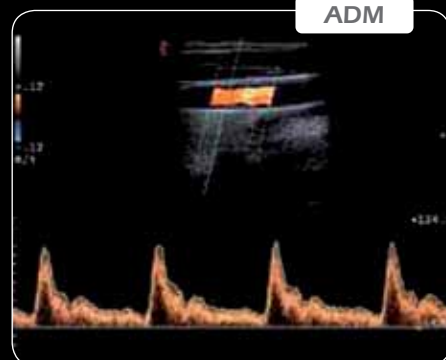
HD-CFM



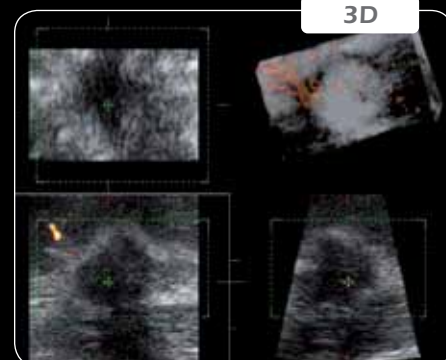
ElaXto



ADM



3D



MView



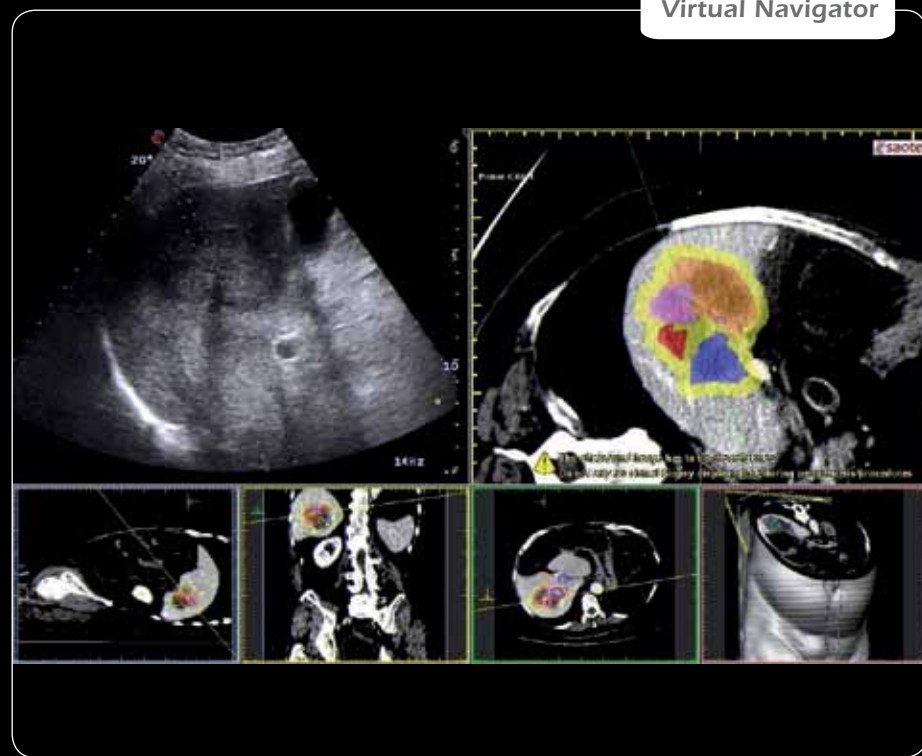
XView



3D



Virtual Navigator





# MyLab<sup>TM</sup>Class C



ISO 13485:2003 ISO 9001:2008

Specifications subject to change without notice  
Information refer to products or modalities not approved in all countries.



0051

## Esaote S.p.A.

International Activities: Via di Caciolle, 15 50127 Florence, Italy, Tel. +39 055 4229 1, Fax +39 055 4229 208, international.sales@esaote.com

Domestic Activities: Via A. Siffredi, 58 16153 Genoa, Italy, Tel. +39 010 6547 1, Fax +39 010 6547 275, info@esaote.com

[www.esaote.com](http://www.esaote.com)

### FRANCE

**Esaote France S.A.R.L.**  
ZA du Bel Air  
10, rue de Témara, 78105 Saint Germain en Laye  
Tel. +33 1 8204 8900, Fax +33 1 3061 7210  
info@esaote.fr

### GERMANY

**Esaote Biomedica Deutschland GmbH**  
Max-Planck-Straße 27a  
50858 Köln  
Tel. +49 2234 688 5600, Fax +49 2234 688 5601  
info@esaote.de

### SPAIN

**Esaote España S.A.**  
Avenida San Sebastian, s/n  
08960 Sant Just Desvern, Barcelona  
Tel. +34 93 473 2090, Fax +34 93 473 2042  
info@esaote.es

### THE NETHERLANDS AND BELGIUM

**Pie Medical Benelux B.V.**  
P.O. Box 1132  
6201 BC Maastricht  
Tel. +31 43 3824650, Fax +31 43 3824651  
benelux@pie.nl

### UK

**Esaote UK**  
400 Thames Valley Park Drive,  
Reading, Berkshire. RG6 1PT  
Tel. +44 118 965 3500, Fax +44 709 288 0231  
infoUK@esaote.com

### NORTH AMERICA

**Biosound Esaote Inc.**  
8000 Castlaway Drive,  
P.O. Box 50858, Indianapolis, IN 46250  
Tel. +1 317 813 6000, Fax +1 317 813 6600  
info@biosound.com

### BRASIL

**Brasilian Direct Office**  
Rua Tomas Carvalhal, 711  
04006-001 São Paulo SP  
Tel. +55 11 2589 0533 Fax +55 11 2589 0527  
edson.lopes@esaote.com

### ARGENTINA

**Esaote Latinoamérica S.A.**  
San Martín 551, Cuerpo 'C', Piso 8, (C1004AAK)  
Buenos Aires  
Tel. +54 11 4326 1832, Fax: +54 11 4328 1245  
info@esaote.com.ar

### INDIA

**Esaote Asia Pacific Diagnostic Private Limited**  
F-1, Level 1, Global Arcade,  
Near Global Business Park  
M.G. Road, Gurgaon (Haryana)-122002  
Tel. +91 124 4775600, Fax +91 124 4775699  
info@esaote.in

### HONG KONG AND FAR EAST

**Esaote China Ltd**  
18/F, 135 Bonham Strand Trade Centre,  
135 Bonham Strand, Sheung Wan, Hong Kong  
Tel. +852 2545 8386, Fax +852 2543 3068  
esaote@esaotechina.co

### CHINA

**Esaote Shenzhen Medical Equipment**  
Room 2608, Tower B  
Beijing Global Trade Center  
36 North Third Ring Road East,  
Dongcheng District, 100013, Beijing  
Tel. +86 010 58257766, Fax +86 010 52257760

### RUSSIAN FEDERATION AND CIS

**Esaote S.p.A.**  
18 Leningradsky prospekt  
Off. 5 and 6, Moscow 125040  
Tel. +7 495 232 0205, Fax +7 495 232 1833  
esaotemoscow@yandex.ru